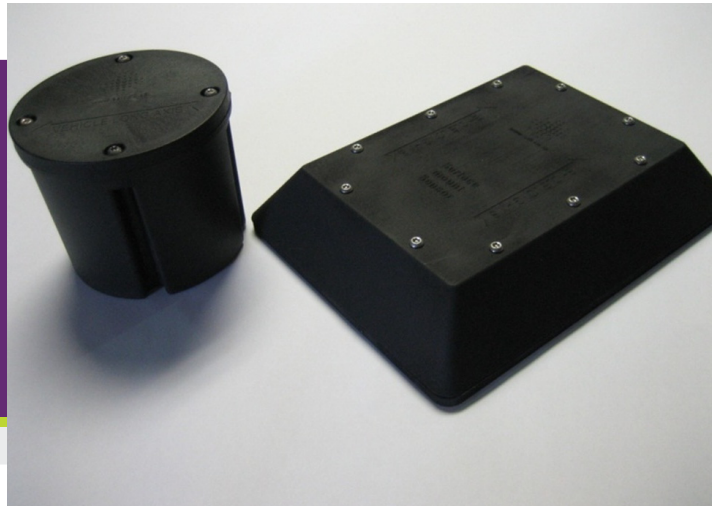




## Wireless Outdoor Sensors



The wireless parking sensors are a new addition to the Intelligent Parking System. These sensors are optimal for parking facilities that are open surfaces, such as parking garage roofs and outdoor lots.

These sensors detect the occupancy of a space by a magnetometer that detects changes in the Earth's magnetic field. Power is supplied to the unit by 4 D-cell batteries and communication is by X-Bee network technology. Both power and communication are wireless, allowing for quick and easy installation.

Depending on the facility's needs and structure, there are two types of wireless sensors, embedded and surface mount. The embedded sensor is great for lots where the sensor cannot be above ground. For example, in areas where snow plows are used the sensor must be embedded to avoid damage by the plows. The surface mount sensor can either be bolted or glued to the surface and is optimal for lots where coring would damage the structural integrity of the floor.

### Wireless Sensor Features:

- > Individual bay monitoring
- > Wireless communication
- > Battery powered
- > Quick and easy installation
- > Ideal for facilities with open surfaces



# ↓ SPECIFICATIONS

## WIRELESS SENSOR

<b>Wireless Module:</b>	Zigbee XB24-ZB with Integrated Wire Antenna
<b>Frequency/Range:</b>	2.4GHz, 133ft minimum (40.54m)
<b>Magnetic Sensor:</b>	2-axis Honeywell HMC1052
<b>Battery Life:</b>	6 years (4 D-cells alkaline batteries)
<b>Operating Current:</b>	.4mA (average), 15uA (sleep), 45mA (max)
<b>Operating Temperature:</b>	-40°C to +75°C (-40°F to +167°F)
<b>Battery voltage Accuracy:</b>	+/- 10mV
<b>Module Size:</b>	Embedded: 2" x 3" x .59" (50.8mm x 76.2mm x 15mm) Surface Mount: .98" x 5.98" x .59" (25mm x 152mm x 15mm)

## ROUTER BOX

<b>Wireless Module:</b>	Zigbee XB24-ZB with Integrated Wire Antenna
<b>Frequency/Range:</b>	2.4GHz, 133ft minimum (40.54m)
<b>Power Source:</b>	10V-30V DC or AC
<b>Operating Current:</b>	110mA (average), 130mA (max) @ 12VDC
<b>Operating Temperature:</b>	-40°C to +75°C (-40°F to +167°F)
<b>Module Size:</b>	4" x 5.05" x .71" (101.6mm x 128.3mm x 18mm)

## ZONE CONTROLLER

<b>Wireless Module:</b>	Zigbee XB24-ZB with RPSMA External Antenna
<b>Range:</b>	2.4GHz, 133ft minimum (40.54m)
<b>Power Source:</b>	10V-30V DC or AC
<b>Operating Current:</b>	139mA (average), 145mA (max) @ 12VDC
<b>Operating Temperature:</b>	-40°C to +75°C (-40°F to +167°F)
<b>Module Size:</b>	Zigbee Coordinator Module: 2" x 4.8" x .71" (50.8mm x 122mm x 18mm) IDI Controller Module: 5.67" x 4.8" x .71" (144mm x 122mm x 18mm)

